



THE LAB EQUIPMENT

Email : [sales@thelabequipment.com](mailto:sales@thelabequipment.com)

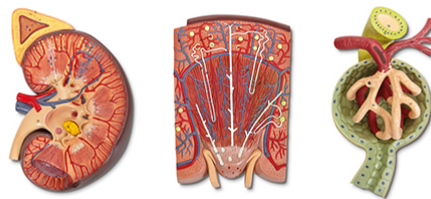
Phone: +91-8759245890

**Product Name :**

Human Kidney, Nephron and Renal  
Corpuscle Model

**Product Code :**

SLE/A/143



**Description :**

Greatly enlarged.

Size (overall), 69 × 29 × 10 cm.

Plaque-mounted series of 3 models, including a 2 1/2× life-size dissection of the kidney and adrenal gland.

Schematic enlargement showing anatomical details of an individual nephron; and a renal corpuscle with Bowman's capsule, glomerulus, and juxtaglomerular apparatus.

Contact Science Lab for your Educational School Science Lab Equipments. We are best educational lab equipments manufacturers, educational lab instruments manufacturer, educational laboratory glassware exporter, educational laboratory microscopes, educational laboratory suppliers, educational scientific lab equipments.