



THE LAB EQUIPMENT

Email : [sales@thelabequipment.com](mailto:sales@thelabequipment.com)

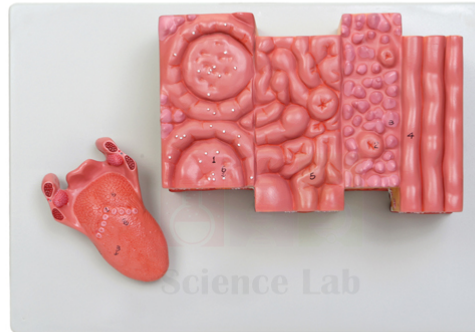
Phone: +91-8759245890

**Product Name :**

Microstructure of the Human Tongue Model

**Product Code :**

SLE/A/105



## Description :

About 20x life size.

Mounted on a durable polymer base.

Includes numbered key.

Size, 33 × 23 × 11 cm.

Histological features of the tongue are shown, including taste buds, lingual and mucous glands, and fine structure of the musculature.

A separate life-sized model of the intact tongue - featuring the palatine and lingual tonsils and the epiglottis - is included.

Contact Science Lab for your Educational School Science Lab Equipments. We are best anatomy model manufacturer, biology lab equipment manufacturer, biology lab instruments exporter, biology lab instruments manufacturer, biology lab instruments supplier, burette pinchclip medium wall india.

**Website:** <https://thelabequipment.com>, **Email:** [sales@thelabequipment.com](mailto:sales@thelabequipment.com)

plot. no.296. Sector 5. Vaishali. Ghaziabad. Uttar Pradesh 201010