



THE LAB EQUIPMENT

Email : [sales@thelabequipment.com](mailto:sales@thelabequipment.com)

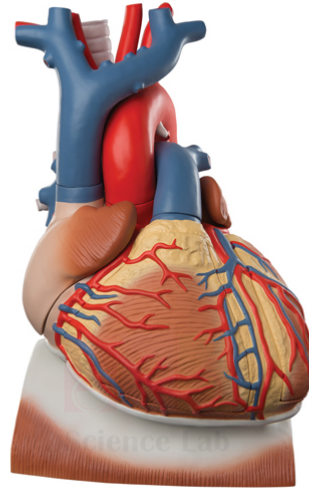
Phone: +91-8759245890

**Product Name :**

Human Heart on Diaphragm Model

**Product Code :**

SLE/A/100



## **Description :**

Life size.

On a green base.

Size, 29 x 18 x 19 cm.

Dissects into 8 parts, including the diaphragm with section of pericardium, thymus gland, apex of the heart, lower part of the ventricles, and ventricles.

Contact Science Lab for your Educational School Science Lab Equipments. We are best maths lab equipment manufacturers in india, physics lab equipments manufacturers, school educational equipments, school lab equipment manufacturer, school lab equipments manufacturers in india, scientific educational lab equipment.

**Website:** <https://thelabequipment.com>, **Email:** [sales@thelabequipment.com](mailto:sales@thelabequipment.com)

plot. no.296. Sector 5. Vaishali. Ghaziabad. Uttar Pradesh 201010