



THE LAB EQUIPMENT

Email : sales@thelabequipment.com

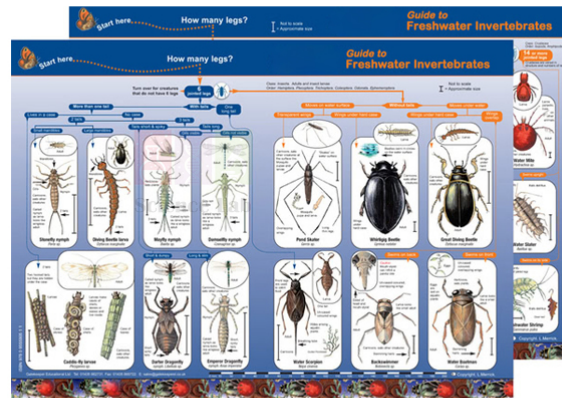
Phone: +91-8759245890

Product Name :

Key to Identifying Water Invertebrates

Product Code :

SLE/EBT/16



Description :

KEY IDENTIFICATION GUIDES K1 - 5

Wipe-clean A3 laminated and folded.

Printed on both sides.

Robust and easy to handle, these are a perfect wildlife reference for schools and nature lovers of all ages.

Easy identification, with key questions that are easy to follow and clear, original full colour illustrations.

Contact Science Lab for your Educational School Science Lab Equipments. We are best geography lab equipments manufacturers, geography lab equipments suppliers, geography lab models suppliers, high school biology lab equipment india, high school biology lab equipment manufacturers, high school chemistry lab equipment manufacturers.

Website: <https://thelabequipment.com>, Email: sales@thelabequipment.com

plot. no.296. Sector 5. Vaishali. Ghaziabad. Uttar Pradesh 201010